



## SynuSoft ES

### **IF YOU DON'T MEASURE IT, YOU CAN'T MANAGE IT.**

SynuSoft Energy System (ES) is an energy monitoring and management system, which provides a web-based solution for deployment on company intranets. ES monitors energy consumption and acts as a central repository for enterprise energy bills and energy related data.

ES allows data gathered from metering systems to be organised into a hierarchical structure that is easily understood by users.

Enterprise energy cost and consumption data is made transparent.

## ES DELIVERS

- » Fully web based application. ES is easy to use and when deployed on a company LAN, easy to access.
- » Monitoring. All historical data is instantly accessible. Cost, consumption and emissions profile data is easily available. Week, Month, Quarter, Year and Custom view are easy to select.
- » Targeting. Consumption Targets may be assigned on the process cost, emissions and consumption data.
- » Highly configurable. Easily model internal company processes and site structure using a configurable tree structure and league tables.
- » Forecasting of energy and emissions profiles.
- » ES supports monitoring of any number of measurable utilities.
- » Budget tracking. Use the Tariff Module to verify bills. Use the same module to analyse and compare different Utility Providers. Examine average daily or weekly energy use profiles.
- » Customisable reporting engine. The reporting engine generates customisable reports on a periodic timeframe and emails these reports to recipients. Report formats include PDF and Excel.
- » Analyse energy profiles and KPI history using regression analysis and CUSUM. Slice and dice historical cost, consumption and emissions data.
- » Easily imports any existing bills or metered data from Excel spreadsheets. Also supports manual entry of data for any period.
- » Upload all energy related documentation using the application's document management features.

## MONITORING

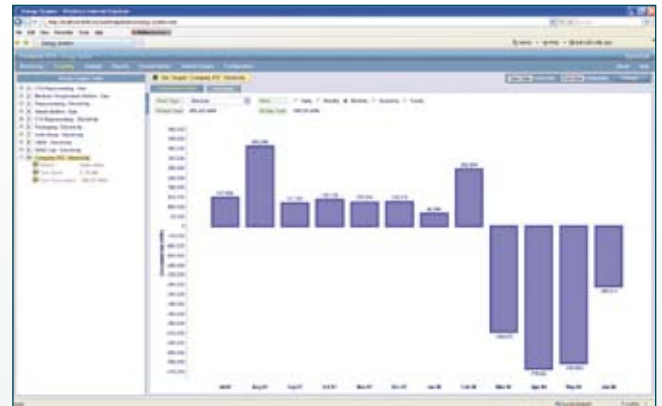


Typical Monitoring/Cost screen shows a monthly cost breakdown by utility.

### FEATURES INCLUDE

- » View data by category plots, time series, pie charts and period comparison charts.
- » Customisable site navigator.
- » On each tree node it is easy to view costs, consumptions, CO2 emissions and forecast any of these data profiles.
- » Add optional league tables to any node.
- » View historic data from any part of your site with the click of a mouse.
- » Export data to Excel.

## TARGETING



Screen showing Targeting/Consumption Data, in this case listing monthly targets vs. actual values.

### FEATURES INCLUDE

- » View targets using league tables.
- » Target cost, consumptions and CO2 emissions.
- » View actual data vs. target data using absolute difference and percentage difference charts.
- » Set targets using company budgets, percent reductions and regression analysis.
- » Create consumption targets using simple percentage values or use regression and CUSUM analysis to establish targets.
- » Set target upper and lower bounds.



## ANALYSIS



Screen showing the Analysis module with two related time series about to be analysed.

### FEATURES INCLUDE

- » Spot performance problems from any portion of your site.
- » View any historic relationship as a Key Performance Indicator (KPI) and analyse a full history of that relationship.
- » Analyse data from any portion of the site.
- » Correlate energy data with any metric e.g. production data and degree-day data.
- » Measure energy intensity against any metric.
- » Create consumption targets using regression analysis.

## REPORTING



Screen showing a portion of a PDF report.

### FEATURES INCLUDE

- » Reports can contain any look or feel. They can include graphical, tabular elements and can be used in managerial or engineering presentations.
- » Automatic emailing of reports to a list of recipients on a scheduled date.
- » Any report can be easily customised to any portion of your site. Easily customise list of recipients and many other features.
- » New reports can easily be added to the system.
- » Reporting supports Excel or PDF formats.



Unit 17 BEaT Centre, Stephenstown Industrial Park, Balbriggan, County Dublin, Ireland  
Phone/Fax: +353 (0)1 8105032 Web: [www.premiumpower.ie](http://www.premiumpower.ie) Email: [energy@premiumpower.ie](mailto:energy@premiumpower.ie)